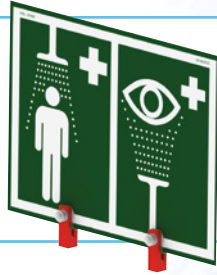




OUTDOOR HEATED EMERGENCY SAFETY SHOWER

- Designed in accordance with ANSI and EU guidelines
- Emergency Safety Shower with Eye/Facewash Fountain
- Insulated and trace tape heated for frost protection
- Hughes shower ball valve for greater reliability and longer life
- Available in Galvanised or Stainless Steel
- Choice of optional components including alarms and foot operation



Outdoor Heated Emergency Safety Showers

EXP-EH-5G/45G

EXP-AH-5G/45G, EXP-EJ-5G/45G

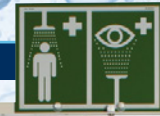
Outdoor Heated Emergency Safety Shower

Hughes Safety Showers manufacture an Emergency Safety Shower with Eye/Facewash Fountain, trace tape heated and pre-insulated.

Pipework available in Galvanised Mild Steel or Stainless Steel.

As above but with extra heating EXP-AH-5G/45G.

Also available without heating EXP-EJ-5G/45G.



EXP-EH-5G/45G

Specification

The shower is operated by a pull handle for ease of use in an emergency. It has a removable self-draining overhead shower nozzle, which is specifically designed for high flow rates in line with ANSI and EU standards.

The eye/facewash has high flow rate aerated diffusers for improved washing action to the eyes, face and hands and the 'unbreakable' eye/facewash fountain incorporates an integral lid connected to the water valve for automatic operation when the lid is pulled down. The lid also ensures that the bowl remains clean and free from contamination at all times.

The eye wash diffusers are fitted with fine mesh strainers and an individual flow controller and are designed to give a gentle flow of aerated water.

The shower is pre-insulated with polyurethane foam to provide maximum insulation and has a corrosion resistant polyethylene outer jacket.

NB: Supplied in sections for assembly on site for economical shipping costs.

Hughes Ball Valve

- Designed using the latest 3D modelling software
- Specifically developed for Hughes Emergency Shower and Eye wash equipment
- Stainless steel construction to cope with the harshest atmospheres
- Low operating torque designed for ease of operation
- Tested and witnessed by independent test house specialist
- Designed for rough service.

All valves are easily removable for servicing and maintenance.



HUGHES



HUGHES-SAFETY-SHOWERS.CO.UK



THE QUEEN'S AWARDS
FOR ENTERPRISE
INTERNATIONAL TRADE
2012



Health & Wellbeing Award



Champion





Outdoor Heated Emergency Safety Showers
EXP-EH-5G/45G
 EXP-AH-5G/45G, EXP-EJ-5G/45G

TECHNICAL DETAILS

Outdoor Heated Emergency Safety Shower

MATERIALS OF CONSTRUCTION

PIPEWORK & FITTINGS (G)	Galvanised Mild Steel with 150lb medium wall tubulars and fittings
PIPEWORK & FITTINGS (GS)	316L Stainless Steel with 150lb medium wall tubulars and fittings
SHOWER OPERATING VALVE	Hughes - 316 Stainless Steel
SHOWER SPRAY OUTLET	Hughes Shower Nozzle Moulded Nylon 6
INSULATION & OUTER CASING	Polyurethane Foam insulation with a Medium Density Polyethylene impact resistant Outer Casing
STANDARD FINISH	White with Green/White Safety Stripes (alternative colours available)

SERVICES

WATER INLET	1 1/4" Male BSP
DESIGN OPERATING PRESSURE	2 to 6 BAR G (Higher supply pressures accommodated with the incorporation of the optional Pressure Reducing Valve)
HEATING TYPE	Trace Tape Heated and Pre-insulated
HEATING LOAD	36 Watts (EH) - 57 Watts (AH)
ELECTRICAL EQUIPMENT - Non Hazardous	Suitable for use in areas classified as Non-Hazardous
ELECTRICAL EQUIPMENT - Hazardous	ATEX Zone 1 & 2 Gas Groups IIA and IIB, Temp Class T3 (IIC available)
ELECTRIC SUPPLY	240V Single Phase, 50/60Hz or 110V available
TEST PRESSURE	10.3 BAR G
MINIMUM FLOW AT OPERATING PRESSURE	Shower: 76 litres/minute minimum Eye/Facewash: 20 litres/minute minimum

ENVIRONMENTAL OPERATING TEMPERATURE

MINIMUM AMBIENT OPERATING TEMP	-10° C (14° F) - EH -20° C (-4° F) - AH 0° C (32° F) - EJ
MAXIMUM AMBIENT OPERATING TEMP	35° C (95° F) - EH, AH & EJ

ACTIVATION/OPERATION

SHOWER OPERATION	Pull Handle
EYEBATH/HAND HELD OPERATION	Pull Lid (Treadle Foot control for hands-free - Optional)

WEIGHTS and DIMENSIONS

OVERALL DIMENSIONS	341(W) x 886(D) x 2317mm(H)
WEIGHT - UNPACKED	34Kg (No options)

Standards



- ALLOCATE A LOCATION REFERENCE FOR EASE OF IDENTIFICATION
- ALL UNITS TO BE ACTIVATED WEEKLY - ANSI Z358.1 2009
- SAFETY SHOWER/EYE WASH MUST BE LOCATED WITHIN 10 SECONDS OR 15 METRES OF A POTENTIAL HAZARD - ANSI Z358.1 2009
- THE UNIT MUST BE LOCATED ON THE SAME LEVEL AS THE HAZARD AND THE PATH OF TRAVEL & LOCAL AREA SHOULD BE FREE FROM OBSTRUCTIONS - ANSI Z358.1 2009
- THE UNIT SHOULD BE WELL LIT AND IDENTIFIED WITH HIGHLY VISIBLE SIGNAGE TO BS EN ISO 7010 - ANSI Z358.1 2009
- FLUSH FOR SUFFICIENT DURATION TO PURGE THE SUPPLY PIPE WITH FRESH WATER
- REPLACE WORN OR ILLEGIBLE SAFETY SIGNS AND STICKERS
- SIGN & DATE SERVICE TAG WHEN SERVICE COMPLETED

HUGHES

HUGHES-SAFETY-SHOWERS.CO.UK





Outdoor Heated Emergency Safety Showers
EXP-EH-5G/45G
 EXP-AH-5G/45G, EXP-EJ-5G/45G

OPTIONS

Options



Shower/Eye wash Sign



Well Glass Light



Sign Box & Lighting



Treadle Foot Control



Shower Proximity Switch



Eye/Facewash Proximity Switch



Flow Switch



Audible/Visual Alarm



Audible Alarm



Visual Alarm



Pressure Reducing Valve



Scald Protection Valve



Freeze Protection Valve



Inlet Flange



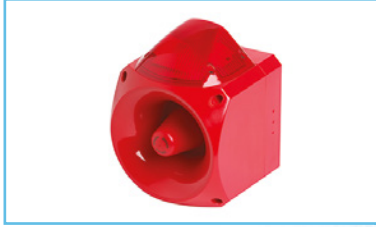
Underground Extention Pipe



Cubicle

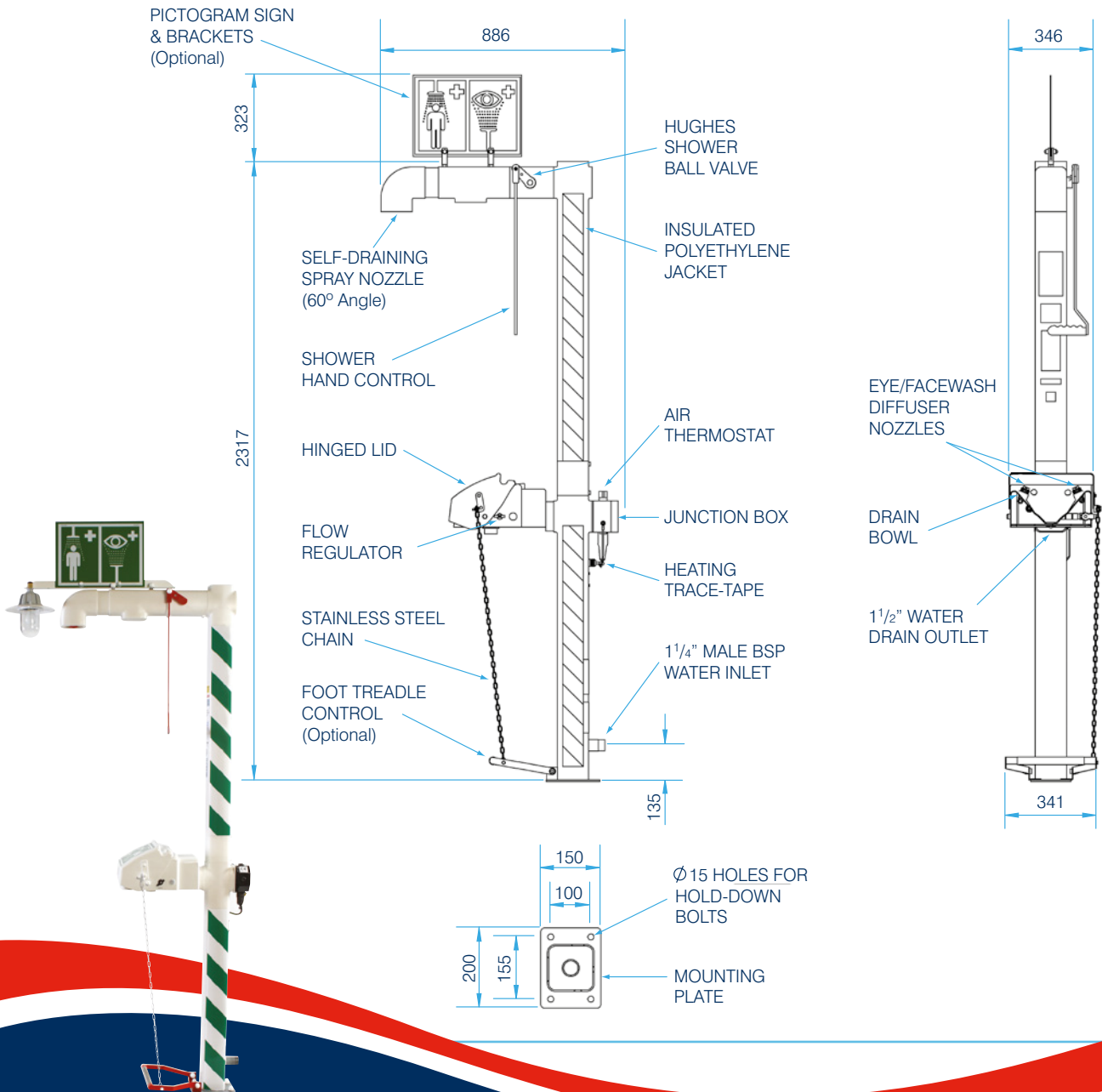
Optional Fittings	Shower/Eye wash Sign	Well Glass Light with Mounting Brackets	Sign Box and Lighting	Treadle Foot Control	Shower Proximity Switch	Eye/Facewash Proximity Switch	Flow Switch	Audible/Visual Alarm	Audible Alarm	Visual Alarm	Brass Pressure Reducing Valve	Scald Protection Valve	Freeze Protection Valve	Inlet Flange	Heated Underground Extention Pipe	Cubicle
-------------------	----------------------	---	-----------------------	----------------------	-------------------------	-------------------------------	-------------	----------------------	---------------	--------------	-------------------------------	------------------------	-------------------------	--------------	-----------------------------------	---------

EXP-EH-5G/45G	●	●	●	●	●	●	●	●	●	●	●	●	●	●	●	●
EXP-EH-5GS/45GS	●	●	●	●	●	●	●	●	●	●	●	●	●	●	●	●
EXP-AH-5G/45G	●	●	●	●	●	●	●	●	●	●	●	●	●	●	●	●
EXP-EJ-5G/45G	●	●	●	●	●	●	●	●	●	●	●	●	●	●	●	●



Outdoor Heated Emergency Safety Showers
EXP-EH-5G/45G
 EXP-AH-5G/45G, EXP-EJ-5G/45G

HUGHES G.A. DRAWING



HUGHES SAFETY SHOWERS LTD
 Whitefield Road, Bredbury, Stockport, Cheshire, SK6 2SS England, UK.
T: +44 (0)161 430 6618

E: info@hughes-safety-showers.co.uk **F:** +44 (0)161 430 7928

www.hughes-safety-showers.co.uk

Registered No. 0939240. VAT Registration No. 918 5005 32. Hughes Safety Showers Ltd is a wholly owned subsidiary of the JD Hughes Group PLC.

